

Research on Flexible Customization of Business Function for Intelligent Traffic Cloud Platform

Hua Pan¹, Zhongxiang Huang², Zengzhen He³

¹Guangxi Xinfazhan Communications Group, Nanning, Guangxi, China

²School of Traffic and Transportation, Changsha University of Science & Technology
Changsha, Hunan, China

³Guangxi Transportation Research & Consulting Co., Ltd., Nanning, Guangxi, China
linqupanhua@126.com



*Journal of Digital
Information Management*

ABSTRACT: According to the flexible customization requirements of Intelligent Traffic Cloud Platform business function, this paper proposed the flexible customized solutions of Intelligent Traffic Cloud Platform based on the business function framework of the existing Intelligent Traffic Cloud Platform. The plan regards the platform business function design and implementation of flexible customization model as the core. The storage of business function customization model is realized based on XML technology. It designs the driving strategy of flexible customization model and realizes the flexible customization of platform business functions. Finally, the feasibility and effectiveness of the proposed scheme is verified by a specific service function on the Intelligent Traffic Cloud Platform.

Subject Categories and Descriptors

[I.2.11 Distributed Artificial Intelligence]; Intelligent agents;
[H.2.3 Languages]; Data description languages

General Terms: Traffic Cloud, Cloud Computing, Intelligent Cloud, Virtualization

Key words: Intelligent Traffic Cloud Platform, Flexible Customization, XML

Received: 10 April 2017, Revised 4 June 2017, Accepted 18 June 2017

1. Introduction

With the development of virtualization and network technology, the current application is no longer installed locally but deployed in the “cloud” side. It has entered the “cloud computing” [1]. Intelligent Traffic Cloud Platform is not only technical integration. It integrates software deployment, operation and maintenance into one integrated PaaS service and submits to the developer as SaaS model [2, 3]. It also reflects the cloud computer operating ideas. Developers can quickly deploy, run and scale software development on the platform without having to build and maintain hardware or installing software middle ware. So it can free the developer from software deployment, operation and maintenance of software.

At present, the customization of software has become the trend and the customization function of personalized service is more and more popular. A large number of research scholars have carried out researches on the customization technology of Intelligent Traffic Cloud Platform business function and made many research results [4]. Such as being based on meta-data customization technology, being based on business rules customization technology and so on. In the practical application, there have been many applications for customized processes such as business process customization, business rules customization and interface

customization. Among them, foreign companies have studied earlier. Such as Sales-force has long focused on developing online customer relationship management (CRM) Software [5, 6]; Google has also developed a large number of online office suite, launched in the online application services based on Google Apps PaaS service Google App Engine; Microsoft launched a platform is both the deployment platform and the cloud computing platform such as Windows Azure Platform. Domestic, such as Ali developed AEP (Alisoft ecommerce platform) platform; Eight hundred customers developed CRM and online Office; Servlet software introduced CServer PaaS platform.

Theoretical research, the literature based on BPEL research SaaS application service process configuration. Each business function contains multiple choices but cannot be modified after the business function instantiation [7]. In literature, a dynamic form customization model for SaaS platform was established. It realizes the dynamic generation of form, display customization and query customization. In this paper, the mapping relationship between business process and business function is established and the custom relationship between business group and business process is established. This paper constructs the customization model of business process for SaaS platform for multi-enterprise group and realizes the individual customization of business process in the enterprise cluster [8, 9]. In literature, a configuration model based on component assembly and customization service is proposed which allows users to model the service. According to their specific business process, the service flow is realized by defining different data association and constraint rules based on the same service component custom made [10]. In literature, the process of customization of SaaS mode based on SLA Intelligent Traffic Cloud Platform is studied. Literature based on the BI-PaaS platform to establish an interface customization system that supports a variety of data sources and display information. It achieved the data display customization, page customization and other functions [11, 12]. Literature classifies the configurable requirements of the SaaS platform and studies the configurable technology solutions[13]. Literature studied the form customization platform for SaaS applications.

The above researches are mostly for a specific business function of custom research. It has specific business limitations and not from the overall business functions to study the flexibility of customization [13]. This paper on the basis of the above study studied the flexible technology of the intelligent traffic cloud platform business function and put forward the flexible customization solution of the intelligent traffic cloud platform business function.

2. Flexible Service Requirements of Intelligent Traffic Cloud Platform Business Function

Intelligent Traffic Cloud Platform as a new information processing infrastructure model and business model has been widely recognized. People began to pay attention

to the scientific problems behind them and the unique core technology. So we can use cloud infrastructure more effective, efficient, economical, quality and construction. In addition, software and resources were put into the cloud infrastructure and use in the form of services for consumers. Services become the basic way to access and amplify all kinds of infrastructure. Cloud computing and service computing is very close, the most commonly mentioned in cloud computing is software as a service (SaaS), platform as a service (PaaS) and infrastructure as a service (IaaS). The service is the core. The recent research on service computing also involves resource sharing and application integration on cloud infrastructure.

Intelligent Traffic Cloud Platform is a way for enterprises to access information resources. Companies do not need to build or deploy themselves. Through the Internet it can be applied on demand and pay on demand [14]. All tenants cannot use the same function to meet the needs of tenants. This requires SaaS with flexible business configurability and scalability, so that it can be based on user needs. It supports the user in the application process of personalized customization and does not affect the use of other users. So each user only is feeling in theirs. The specific performance of Intelligent Traffic Cloud Platform business functions flexible customization is as follows.

(1) Intelligent Traffic Cloud Platform has different requirements for specific business functions for different users [15]. For example, in a specific area, unused application areas have their own specific business function requirements even with the same business order audit.

(2) Now business restructuring, business changes quickly. Business functions face with frequent replacement situation.

Current enterprises in order to survive in the fierce market space must continue to adjust their business. They must pay attention to the latest technological trends to catch up with every step of the technological reform and constantly optimize the industrial structure. They constantly adjust the business process to achieve the optimal development of business processes. Specific Intelligent Traffic Cloud Platform business function custom structure is in Figure 1.

(1) SaaS provides application resources. It is used by enterprises outside the cloud environment. It has the ability to provide customized business functions. It mainly faces ordinary users which is a new situation for users to obtain software services. Enterprises can achieve unified management of computing resources, unified deployment, unified monitoring and unified backup through SaaS mode. It can greatly improve the efficiency of enterprise management. SaaS model has become an effective way for the implementation of information technology in small and medium-sized enterprises.

(2) The main user of PaaS which provides platform

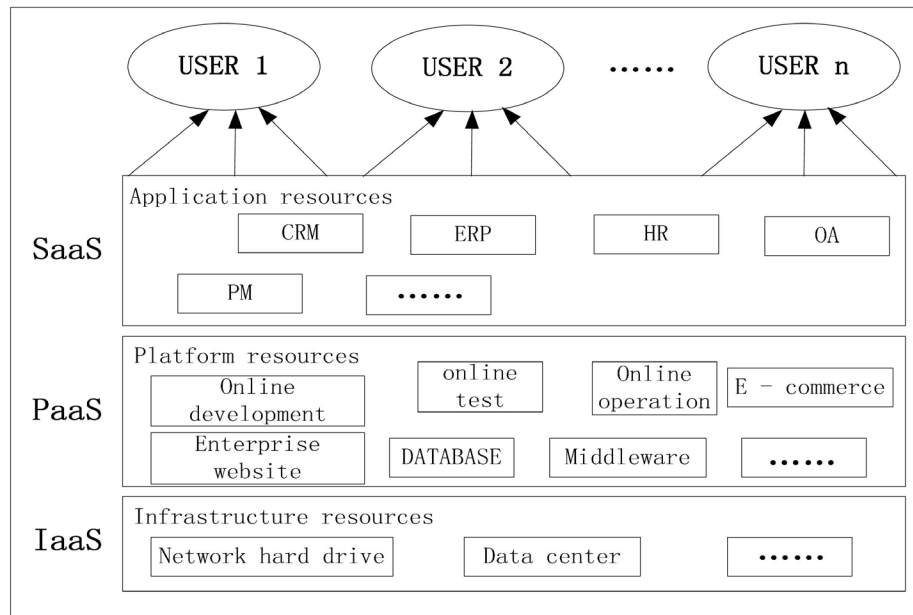


Figure 1. Intelligent Traffic Cloud Platform business function custom architecture

resources is the developer. The model not only uses cloud computing resources but also provides support for the construction and deployment of cloud services. It is a relatively low-cost solution and a business model that presents the infrastructure platform as a service to the user. It has a great attraction for the enterprises with limited funding and IT resources and the enterprises need to expand IT infrastructure [16]. PaaS as a cloud computing and business platform to provide the product can provide higher availability and scalability of application services.

(3) The users of the IaaS service model providing infrastructure-enabled services are primarily system administrators. In the field of IaaS, the representative enterprises are Ali cloud, Jingdong, blue flood, net places, UCloud, Albatron etc. It has become a part of rapid development of cloud computing.

3. Flexible Service Solutions of Intelligent Traffic Cloud Platform Business Function

3.1 Flexible Customization Model of Business Functions

According to the above customization requirements, the following flexible custom model is established and the elements involved in the model are defined as follows. Intelligent Traffic Cloud Platform for enterprises to provide services [17]. At the same time, enterprises can also use the intelligent traffic cloud platform for their own subordinate enterprises to provide services. Its roles include the role of the platform enterprise and the corresponding role of the enterprise.

Definition 1: Intelligent Traffic Cloud Platform roles can be represented by $R_j = (U_{R_j}, R_Set_j)$, U_{R_j} represents the role of the enterprise network corresponding to the Intelligent Traffic Cloud Platform;

$R_Set_j = (R_1, R_2, \dots, R_n)$ represents a collection of roles and n represents the number of roles.

Definition 2: The role of the platform in the implementation of business function customization is required to have specific permissions, the role of permissions can be represent by $A_i = (A_ID_i, R -> A_i)$,

A_ID_i represents the permission ID , which is used to indicate unique permissions;

$R -> A_i$ represents the role of the corresponding permissions.

Definition 3: The traffic function provided on the Intelligent Traffic Cloud Platform can be expressed in terms of $F_k = (F_ID_k, F_N_k, F_D_k)$,

F_ID_k represents the function ID ;

F_N_k represents the function name;

F_D_k represents a specific description of the function.

3.2 Model Storage Based on XML

XML as a scalable language can further define the scope of use and document format based on its basic syntax for heterogeneous data between different applications integration and data exchange. XML also allows develop special data formats according to actual needs. XML development program tool provides a large number of functions to deal with XML files. File exchange is relatively simple and it has become a standard for data exchange between different applications. The analytical performance has also been greatly improved [18]. So the business function type is implemented by XML storage. Through the business type to determine the business functions, business functions flexible customization models are

stored by using XML Schema. Complete business function description information includes: Interface framework, data objects and controls. The specific contents are as follows.

1) The interface framework mainly describes the interface structure information and defines the location of the control, the layout of the interface and so on in the XML file.

2) The data object is the data information corresponding to each control. In the content display process, the definition of how to bind the specific data into the control need to bound with these data objects.

3) Controls: The interface frame has been defined for the location of the control. The control of the style and attributes are defined. These include the length of the control, line thickness, and color and so on. The XML Schema exported from the system contains part of the fragment information that automatically generates the interface. There are Text Box controls, Label controls and Combo Box controls.

Interface generation process specific steps are as follows:

Step 1: Creating the xml schema file;

Step 2: Reading the corresponding control information on the interface;

Step 3: Determining the type of control, establishing the corresponding XML document elements;

Step 4: If you do not need to traverse all the controls, find the next control, otherwise go to step 5;

Step 5: Saving the XML schema file.

XML Schema and interface conversion using LINQ to XML technology. Client read the interface template and restore the interface according to the interface layout and control properties stored in the template. In the XML file where the data is stored, one data is stored in one<element> and the specific information is stored in <attribute> of each field in <element>. In the process of data restore, the value of each <attribute> corresponds to the <name> of the control and the data in the XML file is displayed on the client. The specific code for getting the Excel file data table list is as follows:

```
public static ArrayList GetExcelTables(
    string ExcelFileName)
{
    DataTable dt=new DataTable();
    ArrayList TablesList=new ArrayList();
    if(File.Exists(ExcelFileName))
    {
        using (OleDbConnection conn =
            newOleDbConnection("Provider =
```

```
Microsoft.Jet.OLEDB.4.0;
Extended Properties=Excel 8.0;Data
Source=
" +ExcelFileName))
{
    try{conn.Open();
    dt=conn.GetOleDbSchemaTable(OleDb
    SchemaGuid.Tables,
    new object[] { null, null, null,
    "TABLE" }); }
    catch (Exception exp){throw exp;}
    the number of data tables
    int tablecount = dt.Rows.Count;
    for (int i = 0; i < tablecount; i++)
    {
        string tablename =
        dt.Rows[i][2].ToString().Trim().
        TrimEnd('$');
        if (TablesList.IndexOf(tablename)
        < 0)
        {
            TablesList.Add(tablename);}}}}
    return TablesList;
}
```

3.3 The Model-driven Strategy Based on User Identity

There have been many studies on data acquisition software model based on event-driven[15] and the event-driven thinking was introduced into data acquisition-related application software development. In this paper, we use the model-driven strategy based on user identity and use the C # delegation mechanism to apply the strategy to model-driven. The flexibility of the business function of the custom model loading starts from U_{Rj} , resulting in A_{ID_i} and we can find the corresponding business function model in the business function of the flexible custom model library [18, 19]. For the general tenants of the Intelligent Traffic Cloud Platform, only the model-driven strategy can be dynamically loaded by user authentication. The specific flexible custom model driving strategy model and algorithm are as follows.

Algorithm: Flexible Custom Model Driving Strategy

Enter: Enterprise logo

Output: Business process execution results

BEGIN

Step 1: Enterprise U_{Rj} login Intelligent Traffic Cloud Platform and send the user name and password to the cloud service platform;

Step 2: Cloud service platform complete the certification

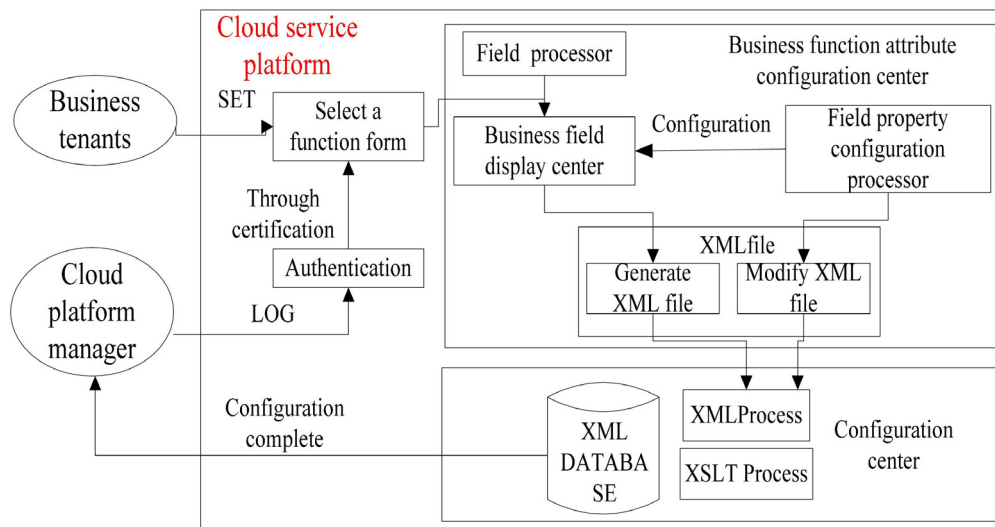


Figure 2. Dynamic loading model based on user identity

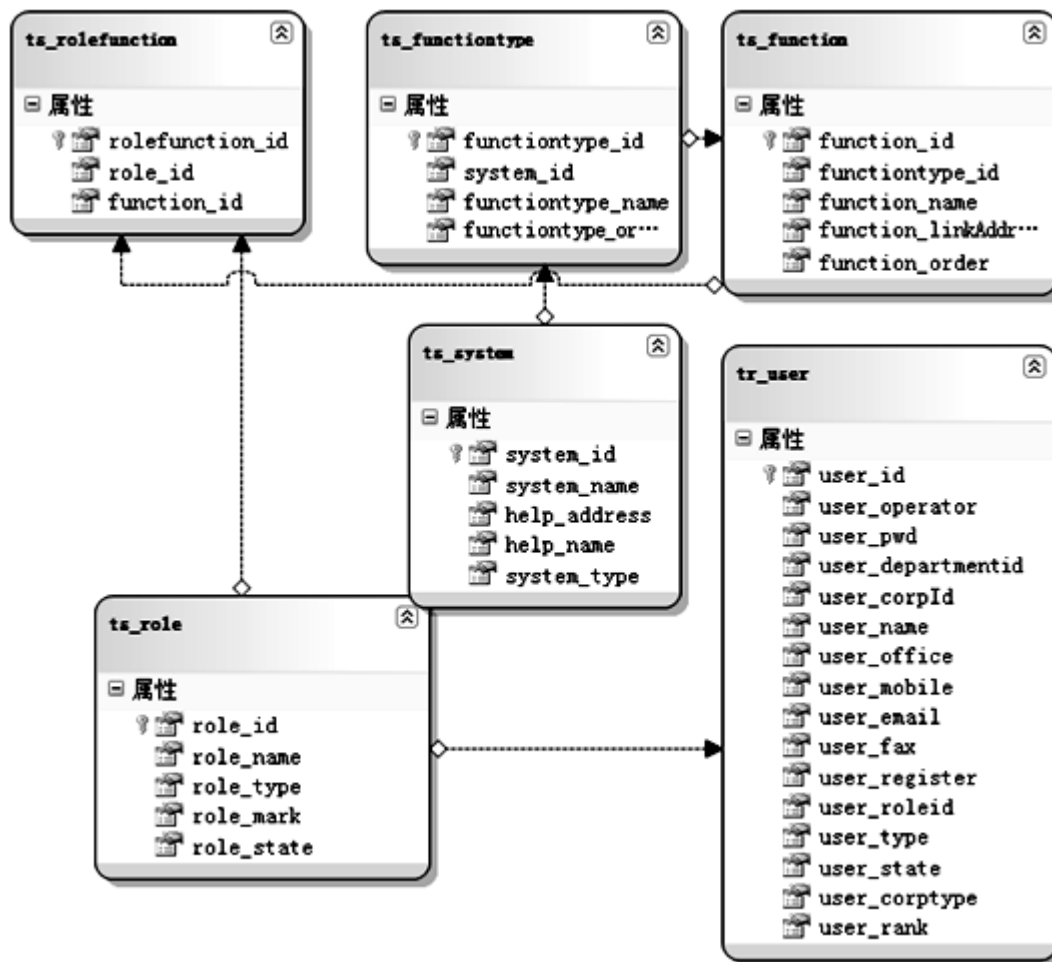


Figure 3. Logical diagrams of the business function table and user role table

of the enterprise' identity. The enterprise passes the authentication then the system jump to Step3; otherwise the error message is prompted and exited from the system;

Step 3: Have the user role to get the corresponding permissions $R_{-} > A_i$;

Step 4: According to the authority to enter the corresponding function custom model library and customize the corresponding business function $F_{-}N_k$ by $F_{-}ID_k$.

END

4. Application and Verification

Intelligent Traffic Cloud Platform provides SaaS rental service models for multiple businesses. This needs to be tailored to your needs. The platform also provides PaaS service models of enterprise's secondary development of custom development tools. The development environment and deployment architecture may vary depending on the situation. This paper is simply to make a simple model system for the verification of business function flexible customization techniques.

4.1 Development Environment

This paper is based on NET development based. The main development tools is Windows 7 operating system and the integrated development environment is Microsoft Visual Studio 2010. The development language is C # and the database is SQL Server 2008.

4.2 Functional Verification

The Intelligent Traffic Cloud Platform business customization solution has been applied to the specific system of business function custom module and adds business functions and role permissions settings according to the specific business system dynamics. Among them, in order to ensure the flexibility of business functions customization we need the flexible business function custom database for design. The information in the main table and its logical relationship is displayed by Visual Studio 2010's SFunction.dbml. It is shown in Figure 4.

4.3 Performance Testing

This paper uses Load Runner v8.1, an industry-standard load-testing tool that predicts system behavior and performance, to predict system behavior and optimize

system performance. The test object is the entire enterprise system by simulating the actual user's operating behavior and real-time performance to monitor. This paper is mainly used to test the performance of Window resources and the average transaction response time. According to the selection principle of performance test, a total of four typical test points were selected. They were shown in Table 1.

Test Scenario Description:

According to the size of the system, the five times pressure scene test:

- 50 virtual users

The scenes of the test process are as follows:

- **Pressurized Mode:** Loading all users at the same time;
- **Stable the Running Time:** User script running 90min;
- **Decompression Mode:** At the same time uninstall all users;
- **Thinking Time Setting:** Randomly selected for the time recording time of 50% -150%;
- **Other Settings:** A complete simulation of IE browser behavior; simulated browser cache.

In order to make the test process and test results as accurately as possible to reflect the reality of the system scene, the test process selected four representative businesses. In addition, according to the preliminary analysis, each number of concurrent users under the conditions of the business assigned to a certain number of virtual users. We can see Table 2.

Numbers	Test points	Case ratio (%)	Script name
1	Function added	25%	Creation_1
2	Function delete	25%	Modification_1
3	Role added	25%	Query_1
4	Role delete	25%	Deletion_1

Table 1. Test points table

Numbers	Test points	User number
1.	Function added	12
2.	Function delete	12
3.	Role added	13
4.	Role delete	13

Table 2. Test Scenario and Virtual Concurrent User Assignment Table

The report on resource usage and average transaction response time generated by Load Runner is shown in Figure 4 and Figure 5 below, where the following figure shows the following indicators and their specific values.

- Disk Time(PhysicalDisk_Total)
- Idle Time(PhysicalDisk_Total)

- Interrupt Time(Processor_Total)
- Privileged Time(Processor_Total)
- Processor Time(Processor_Total)

Figure 5 shows that the average event response time is around 6.5 seconds. This basically meets the performance requirements of the software.

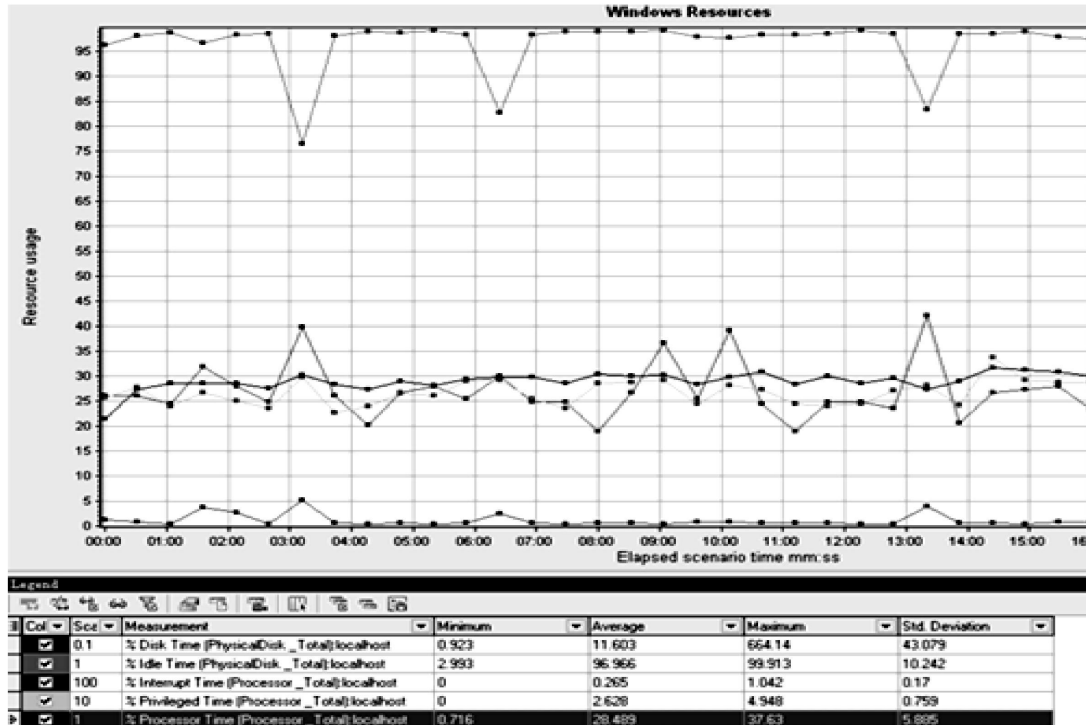


Figure 4. Window resource usages

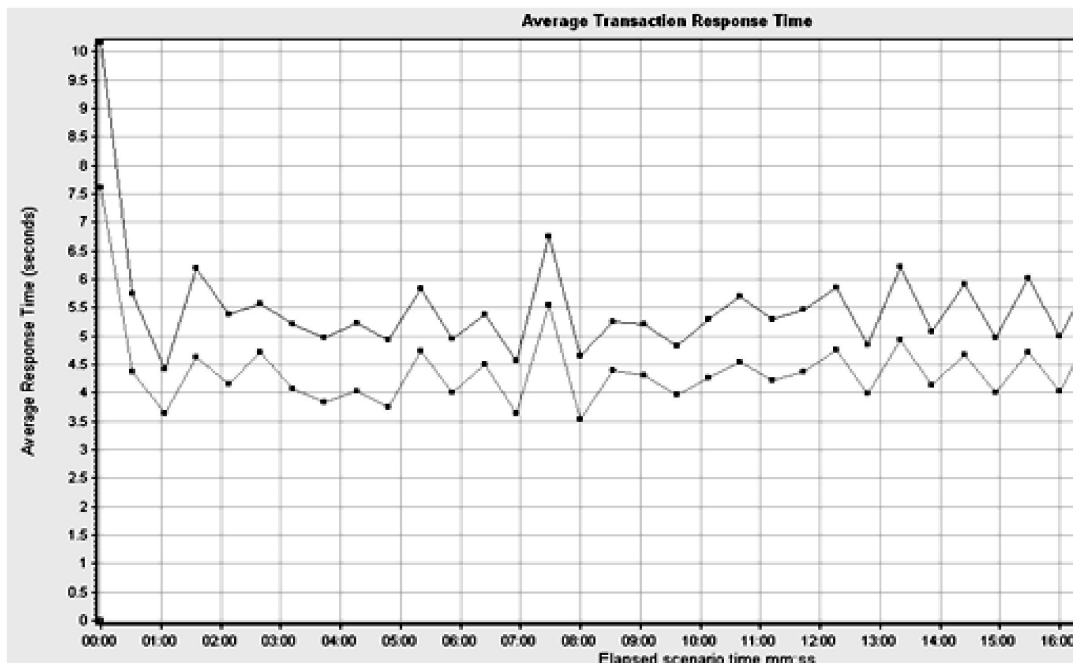


Figure 5. Average transaction response time

5. Conclusion

This paper presents a flexible customization solution for Intelligent Traffic Cloud Platform. This solution has been applied to a specific business system. Different users can flexibly customize the business functions they need according to their own authority. System can provide business function configuration Interface. Through various types of configuration templates, administrators can configure business functions without programming and generate new features. This paper lacks research on security issues in the customization of business functions. So how to control the wisdom of traffic cloud platform business function customization of the authority is the next research direction.

Acknowledgements

This work is supported by “Guangxi post-doctoral special projects”

References

- [1] Mwilu, Sangupamba, Odette., Isabelle Comyn-Wattiau, Prat, Nicolas. (2016). Design science research contribution to business intelligence in the cloud—A systematic literature review. *Future Generation Computer Systems*. 63, 108-122.
- [2] Wood, T., Ramakrishnan, K. K., Hwang, J., Liu, G., Zhang, W. (2015). Toward a software-based network: integrating software defined networking and network function virtualization. *IEEE Network*, 29 (3) 36-41.
- [3] Shang, X., Liu, X., Xiong, G., Cheng, C., Ma, Y., Nyberg, T. R. (2013). Social manufacturing cloud service platform for the mass customization in apparel industry. *In: Service Operations and Logistics, and Informatics (SOLI)*, 2013 IEEE International Conference on (220-224). IEEE. (July)
- [4] Thakare, U. S, Borkar, S, M. (2017). Implementation of WSN's Device Addressing, Data Aggregation and Secure Control In IoT Environment.
- [5] Li, B., Hou, B., Yu, W. (2017). Applications of artificial intelligence in intelligent manufacturing: a review, *Frontiers of Information Technology & Electronic Engineering*, 18 (1) 86-96.
- [6] He, Y., Li, W., Zhang, L., Wang, J., Qi, Q. (2016, July). ECCN: An Elastic Customized Cloud Network Platform. *In: Networking and Network Applications (NaNA)*, 2016 International Conference on (429-432). IEEE.
- [7] John, W., Pentikousis, K., Agapiou, G., Jacob, E., Kind, M., Manzalini, A., Meirosu, C. (2013). Research directions in network service chaining. *In: Future Networks and Services (SDN4FNS)*, 2013 IEEE SDN for (p. 1-7). IEEE. (November).
- [8] Wu, W., Shi, L., Liu, X. (2016). Research on the architecture of cloud computing ground information port based on SDN, *In: Communications and Information Technologies (ISCIT)*, 2016 16th International Symposium on. IEEE, 469-473.
- [9] Liu, Fei., Hao, Fengjie. (2015). Web Service Integrated Cloud Computing Management Information System. *In: Intelligent Human-Machine Systems and Cybernetics (IHMSC)*, 2015 7th International Conference on. Vol. 2. IEEE.
- [10] Morariu, Octavian, Borangiu, Theodor., Raileanu, Silviu. (2015). “vMES: Virtualization aware manufacturing execution system. *Computers in Industry* 67, 27-37.
- [11] Wang, X., Li, Z. (2016). Traffic and Transportation Smart with Cloud Computing on Big Data, *IJCSA*, 13 (1) 1-16.
- [12] Wang, P. Y., Shen, J., Guo, W. Q. (2015). Cloud-based Government Procurement Information Integration Platform, *Journal of Digital Information Management*, 13 (3).
- [13] Desai, N S.(2016). Mobile cloud computing in business,. *International Journal of Information*, 6(1/2).
- [14] Chen, M., Zhang, Y., Hu, L. (2015). Cloud-based wireless network: Virtualized, reconfigurable, smart wireless network to enable 5G technologies, *Mobile Networks and Applications*, 20 (6) 704-712.
- [15] Tang, J. P., Li, L. L. (2014). Big Data Sensing Information Processing Platform for Intelligent Traffic, Applied Mechanics and Materials. *Trans Tech Publications*, 667. 324-327.
- [16] Liang, C, Yu, F. R. (2015). Wireless network virtualization: A survey, some research issues and challenges, *IEEE Communications Surveys & Tutorials*, 17 (1) 358-380.
- [17] Fengyi, Y., Haining, W., Chengli, M. (2015). A flexible three clouds 5G mobile network architecture based on NFV & SDN. *China Communications*, 12 (Supplement): 121-131.
- [18] Yi, M., Wang, Y., Yan, H. (2016). Data Acquisition and Analysis from Equipment to Mobile Terminal in Industrial Internet of Things, International Conference on Industrial IoT Technologies and Applications. Springer International Publishing, 24-35.
- [19] Wang, J., Zhang, L., Duan, L., Gao, R. X. (2017). A new paradigm of cloud-based predictive maintenance for intelligent manufacturing. *Journal of Intelligent Manufacturing*, 28 (5) 1125-1137.
- [20] Reddy C, Kishor Kumar., Anisha, P R (2016). Cooperative Integrity Verification Schemes for Cloud Storage Data, *Journal of Intelligent Computing*, 7 (2) 74-81.